



Change of VAT Rate to take effect from 4th January 2011



Circle of Excellence
Winner 2009



Customer Development Centre

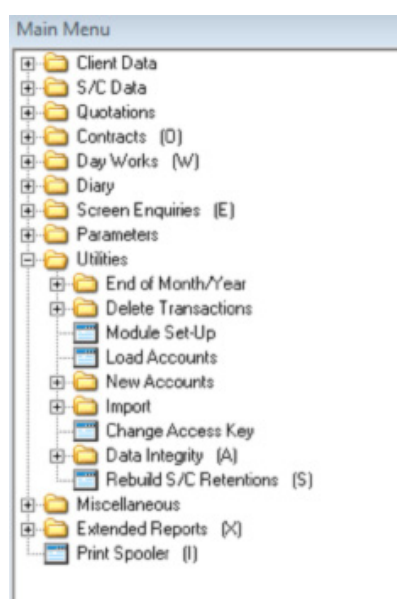
Sage Construct

From 4th January 2011, the UK standard rate of VAT will increase from 17.5% to 20%. This factsheet explains how this change affects Sage Construct and what you need to do.

Sage Construction does not have any VAT table to change. The VAT tables are derived from your Sage Accounts Package. Separate notes are provided on these products on how to update the VAT rate.

It would be advisable to post all purchase and sales documents from Construct prior to making the VAT changes in your accounts program and entering any new documents with the new VAT rate. Once you have updated your VAT rate in your accounts program you need to run the following in Sage Construction:

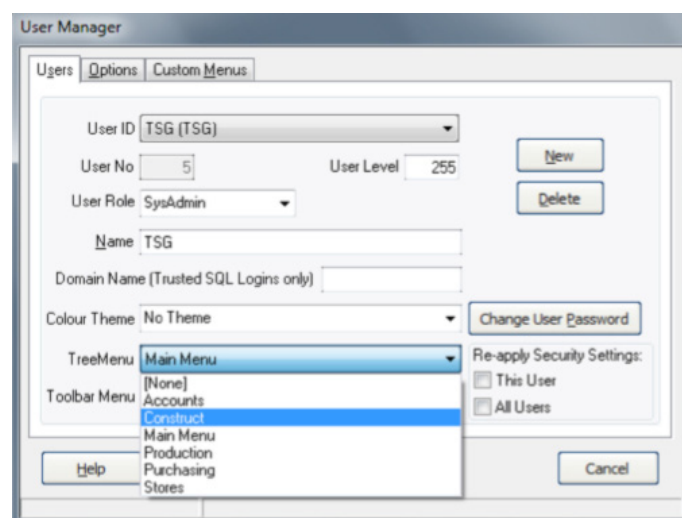
- From the tree menu select – **Utilities > Load Accounts** click **CLOSE** when prompted.



If you are using Sage L100 or Sage MMS it may say it is not available, this is normal.

NOTE: If you have an amended menu then the option might not be there, please change your menu to the standard one called Construct.

- This can be done by selecting **Tools > Users** and changing the tree menu to **Construct** and click **Apply**.
- Change back your amended menu once complete.



Should you have any queries then please log a call as normal with our helpdesk.

For further detailed information and HMRC guidance about the change, please visit the HMRC Website.

Visit www.tsg.com/vatchange2011 for more details

All information contained in this leaflet is correct at the time of going to print. © 2010, Terms and Conditions apply. We reserve the right to alter, correct and modify the publication and the services offered within this publication without notice and without incurring liability