



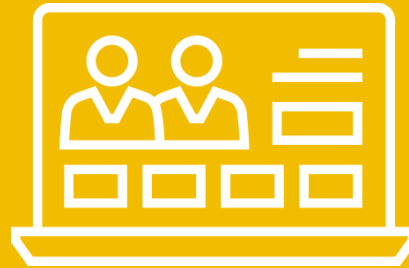
Microsoft
Partner



Gold Cloud Productivity
Gold Collaboration and Content
Gold Datacenter
Gold Enterprise Resource Planning
Gold Small and Midmarket Cloud Solutions
Gold Windows and Devices
Gold Application Development
Gold Messaging
Gold Cloud Customer Relationship Management

NAV-igating to Business Central, or not?

FAQs



Q: Can I continue to purchase extra concurrent users for my existing NAV system?

A: Yes, providing you have a current enhancement plan, but please note they will only upgrade one-for-one when you move to Business Central.



Q: Is Business Central available other than as a SaaS model?

A: Yes, Business Central is available as SaaS (Monthly in Azure), subscription (Monthly anywhere) and perpetual plus enhancement (Initial plus annual enhancement).



Q: I have a version of NAV between 2013 and 2017, how does this affect me?

A: As long as you have a current enhancement plan, it doesn't – you can still upgrade your licence to any version up to 2018 and you can go to Business Central if you want!



Q: Can I downgrade my Business Central Licence to a NAV Licence?

A: No, this is not an option that Microsoft offers.



Q: Who can advise me on the best course of action for my business?

A: Speak to one of our experts at #TeamTSG - visit www.tsg.com/NAV to book a one-to-one chat at a time that suits you.